



Model Number

V1-M16-500

Receptacles, M12/M16, 4-pin

Features

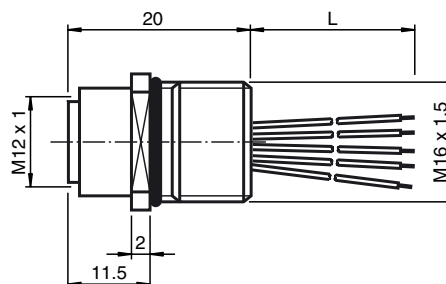
- Front/screw mounting

Accessories

LOCKNUT M16 NICKEL BRASS

Nut, nickel-plated brass

Dimensions



Technical data

General specifications

| | |
|---------------------|-----------|
| Number of pins | 4 |
| Connection 1 | socket |
| Construction type 1 | straight |
| Threading 1 | M12 |
| Connection 2 | cable end |
| UL File Number | E191152 |

Electrical specifications

| | | |
|-----------------------|-------|----------------------------|
| Operating voltage | U_B | max. 250 V |
| Test voltage | | > 2000 V _{eff} AC |
| Operating current | I_B | max. 4 A |
| Volume resistance | | < 3 mΩ |
| Insulation resistance | | ≥ 100 MΩ |

Ambient conditions

| | |
|---------------------|---------------------------------------|
| Ambient temperature | -25 ... 85 °C (-13 ... 185 °F) active |
| | -40 ... 85 °C (-40 ... 185 °F) fixed |
| Pollution degree | 3 |

Mechanical specifications

| | |
|----------------------|--|
| Degree of protection | IP67 |
| Connection | Tinned copper single leads, Ø1.2 ±0.07 mm |

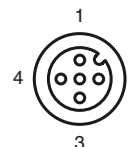
Material

| | |
|-------------------|---------------------------------|
| Contacts | CuZn |
| Contact surface | Au |
| Threaded bushings | Zinc die-casting, nickel-plated |
| Seal | FKM |
| Core insulation | TPE |

Cable

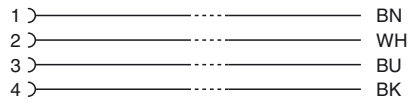
| | |
|------------------------|--------------------------|
| Cores | 4 x 0.34 mm ² |
| Conductor construction | 7 x 0.25 mm Ø AWG 22 |
| Length | L 500 mm |

Electrical connection

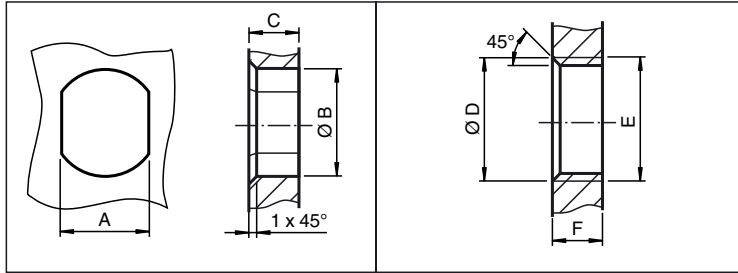


Release date: 2018-03-22 11:19 Date of issue: 2018-03-22 226470_eng.xml

Electrical connection



Installation Note



| | A | B | C | D | E | F |
|--------|----------------------|------------------------|----------|----------------------|---------|----------|
| M8 | 7.1 ^{+0.1} | Ø 8.2 ^{+0.1} | 2 - 4 mm | - | M8x0.5 | 2 - 4 mm |
| M12 | 11 ^{+0.1} | Ø 12.2 ^{+0.1} | < 4 mm | - | M12x1 | < 4.5 mm |
| M16 | 13.5 ^{+0.1} | Ø 16.1 | < 4.5 mm | Ø 17 ^{+0.2} | M16x1.5 | > 2.5 mm |
| M20 | 13.5 ^{+0.1} | Ø 20.1 | - | Ø 20 ^{+0.2} | M20x1.5 | < 6 mm |
| PG9 | 13.5 ^{+0.1} | Ø 15.3 ^{+0.1} | < 4.5 mm | Ø 16 | PG9 | > 2.5 mm |
| PG13.5 | 18.8 ^{+0.1} | Ø 20.5 ^{+0.1} | - | Ø 22 ^{±0.1} | PG13.5 | - |

Release date: 2018-03-22 11:19 Date of issue: 2018-03-22 226470_eng.xml